

CURVE DATA	CITY OF LANCASHIRE
1. 20' RADIUS	PLANNING DEPARTMENT
2. 15' RADIUS	PLANNING DEPARTMENT
3. 10' RADIUS	PLANNING DEPARTMENT
4. 5' RADIUS	PLANNING DEPARTMENT
5. 10' RADIUS	PLANNING DEPARTMENT
6. 15' RADIUS	PLANNING DEPARTMENT
7. 20' RADIUS	PLANNING DEPARTMENT
8. 25' RADIUS	PLANNING DEPARTMENT
9. 30' RADIUS	PLANNING DEPARTMENT
10. 35' RADIUS	PLANNING DEPARTMENT
11. 40' RADIUS	PLANNING DEPARTMENT
12. 45' RADIUS	PLANNING DEPARTMENT
13. 50' RADIUS	PLANNING DEPARTMENT
14. 55' RADIUS	PLANNING DEPARTMENT
15. 60' RADIUS	PLANNING DEPARTMENT
16. 65' RADIUS	PLANNING DEPARTMENT
17. 70' RADIUS	PLANNING DEPARTMENT
18. 75' RADIUS	PLANNING DEPARTMENT
19. 80' RADIUS	PLANNING DEPARTMENT
20. 85' RADIUS	PLANNING DEPARTMENT
21. 90' RADIUS	PLANNING DEPARTMENT
22. 95' RADIUS	PLANNING DEPARTMENT
23. 100' RADIUS	PLANNING DEPARTMENT
24. 105' RADIUS	PLANNING DEPARTMENT
25. 110' RADIUS	PLANNING DEPARTMENT
26. 115' RADIUS	PLANNING DEPARTMENT
27. 120' RADIUS	PLANNING DEPARTMENT
28. 125' RADIUS	PLANNING DEPARTMENT
29. 130' RADIUS	PLANNING DEPARTMENT
30. 135' RADIUS	PLANNING DEPARTMENT
31. 140' RADIUS	PLANNING DEPARTMENT
32. 145' RADIUS	PLANNING DEPARTMENT
33. 150' RADIUS	PLANNING DEPARTMENT
34. 155' RADIUS	PLANNING DEPARTMENT
35. 160' RADIUS	PLANNING DEPARTMENT
36. 165' RADIUS	PLANNING DEPARTMENT
37. 170' RADIUS	PLANNING DEPARTMENT
38. 175' RADIUS	PLANNING DEPARTMENT
39. 180' RADIUS	PLANNING DEPARTMENT
40. 185' RADIUS	PLANNING DEPARTMENT
41. 190' RADIUS	PLANNING DEPARTMENT
42. 195' RADIUS	PLANNING DEPARTMENT
43. 200' RADIUS	PLANNING DEPARTMENT
44. 205' RADIUS	PLANNING DEPARTMENT
45. 210' RADIUS	PLANNING DEPARTMENT
46. 215' RADIUS	PLANNING DEPARTMENT
47. 220' RADIUS	PLANNING DEPARTMENT
48. 225' RADIUS	PLANNING DEPARTMENT
49. 230' RADIUS	PLANNING DEPARTMENT
50. 235' RADIUS	PLANNING DEPARTMENT
51. 240' RADIUS	PLANNING DEPARTMENT
52. 245' RADIUS	PLANNING DEPARTMENT
53. 250' RADIUS	PLANNING DEPARTMENT
54. 255' RADIUS	PLANNING DEPARTMENT
55. 260' RADIUS	PLANNING DEPARTMENT
56. 265' RADIUS	PLANNING DEPARTMENT
57. 270' RADIUS	PLANNING DEPARTMENT
58. 275' RADIUS	PLANNING DEPARTMENT
59. 280' RADIUS	PLANNING DEPARTMENT
60. 285' RADIUS	PLANNING DEPARTMENT
61. 290' RADIUS	PLANNING DEPARTMENT
62. 295' RADIUS	PLANNING DEPARTMENT
63. 300' RADIUS	PLANNING DEPARTMENT
64. 305' RADIUS	PLANNING DEPARTMENT
65. 310' RADIUS	PLANNING DEPARTMENT
66. 315' RADIUS	PLANNING DEPARTMENT
67. 320' RADIUS	PLANNING DEPARTMENT
68. 325' RADIUS	PLANNING DEPARTMENT
69. 330' RADIUS	PLANNING DEPARTMENT
70. 335' RADIUS	PLANNING DEPARTMENT
71. 340' RADIUS	PLANNING DEPARTMENT
72. 345' RADIUS	PLANNING DEPARTMENT
73. 350' RADIUS	PLANNING DEPARTMENT
74. 355' RADIUS	PLANNING DEPARTMENT
75. 360' RADIUS	PLANNING DEPARTMENT
76. 365' RADIUS	PLANNING DEPARTMENT
77. 370' RADIUS	PLANNING DEPARTMENT
78. 375' RADIUS	PLANNING DEPARTMENT
79. 380' RADIUS	PLANNING DEPARTMENT
80. 385' RADIUS	PLANNING DEPARTMENT
81. 390' RADIUS	PLANNING DEPARTMENT
82. 395' RADIUS	PLANNING DEPARTMENT
83. 400' RADIUS	PLANNING DEPARTMENT
84. 405' RADIUS	PLANNING DEPARTMENT
85. 410' RADIUS	PLANNING DEPARTMENT
86. 415' RADIUS	PLANNING DEPARTMENT
87. 420' RADIUS	PLANNING DEPARTMENT
88. 425' RADIUS	PLANNING DEPARTMENT
89. 430' RADIUS	PLANNING DEPARTMENT
90. 435' RADIUS	PLANNING DEPARTMENT
91. 440' RADIUS	PLANNING DEPARTMENT
92. 445' RADIUS	PLANNING DEPARTMENT
93. 450' RADIUS	PLANNING DEPARTMENT
94. 455' RADIUS	PLANNING DEPARTMENT
95. 460' RADIUS	PLANNING DEPARTMENT
96. 465' RADIUS	PLANNING DEPARTMENT
97. 470' RADIUS	PLANNING DEPARTMENT
98. 475' RADIUS	PLANNING DEPARTMENT
99. 480' RADIUS	PLANNING DEPARTMENT
100. 485' RADIUS	PLANNING DEPARTMENT
101. 490' RADIUS	PLANNING DEPARTMENT
102. 495' RADIUS	PLANNING DEPARTMENT
103. 500' RADIUS	PLANNING DEPARTMENT
104. 505' RADIUS	PLANNING DEPARTMENT
105. 510' RADIUS	PLANNING DEPARTMENT
106. 515' RADIUS	PLANNING DEPARTMENT
107. 520' RADIUS	PLANNING DEPARTMENT
108. 525' RADIUS	PLANNING DEPARTMENT
109. 530' RADIUS	PLANNING DEPARTMENT
110. 535' RADIUS	PLANNING DEPARTMENT
111. 540' RADIUS	PLANNING DEPARTMENT
112. 545' RADIUS	PLANNING DEPARTMENT
113. 550' RADIUS	PLANNING DEPARTMENT
114. 555' RADIUS	PLANNING DEPARTMENT
115. 560' RADIUS	PLANNING DEPARTMENT
116. 565' RADIUS	PLANNING DEPARTMENT
117. 570' RADIUS	PLANNING DEPARTMENT
118. 575' RADIUS	PLANNING DEPARTMENT
119. 580' RADIUS	PLANNING DEPARTMENT
120. 585' RADIUS	PLANNING DEPARTMENT
121. 590' RADIUS	PLANNING DEPARTMENT
122. 595' RADIUS	PLANNING DEPARTMENT
123. 600' RADIUS	PLANNING DEPARTMENT
124. 605' RADIUS	PLANNING DEPARTMENT
125. 610' RADIUS	PLANNING DEPARTMENT
126. 615' RADIUS	PLANNING DEPARTMENT
127. 620' RADIUS	PLANNING DEPARTMENT
128. 625' RADIUS	PLANNING DEPARTMENT
129. 630' RADIUS	PLANNING DEPARTMENT
130. 635' RADIUS	PLANNING DEPARTMENT
131. 640' RADIUS	PLANNING DEPARTMENT
132. 645' RADIUS	PLANNING DEPARTMENT
133. 650' RADIUS	PLANNING DEPARTMENT
134. 655' RADIUS	PLANNING DEPARTMENT
135. 660' RADIUS	PLANNING DEPARTMENT
136. 665' RADIUS	PLANNING DEPARTMENT
137. 670' RADIUS	PLANNING DEPARTMENT
138. 675' RADIUS	PLANNING DEPARTMENT
139. 680' RADIUS	PLANNING DEPARTMENT
140. 685' RADIUS	PLANNING DEPARTMENT
141. 690' RADIUS	PLANNING DEPARTMENT
142. 695' RADIUS	PLANNING DEPARTMENT
143. 700' RADIUS	PLANNING DEPARTMENT
144. 705' RADIUS	PLANNING DEPARTMENT
145. 710' RADIUS	PLANNING DEPARTMENT
146. 715' RADIUS	PLANNING DEPARTMENT
147. 720' RADIUS	PLANNING DEPARTMENT
148. 725' RADIUS	PLANNING DEPARTMENT
149. 730' RADIUS	PLANNING DEPARTMENT
150. 735' RADIUS	PLANNING DEPARTMENT
151. 740' RADIUS	PLANNING DEPARTMENT
152. 745' RADIUS	PLANNING DEPARTMENT
153. 750' RADIUS	PLANNING DEPARTMENT
154. 755' RADIUS	PLANNING DEPARTMENT
155. 760' RADIUS	PLANNING DEPARTMENT
156. 765' RADIUS	PLANNING DEPARTMENT
157. 770' RADIUS	PLANNING DEPARTMENT
158. 775' RADIUS	PLANNING DEPARTMENT
159. 780' RADIUS	PLANNING DEPARTMENT
160. 785' RADIUS	PLANNING DEPARTMENT
161. 790' RADIUS	PLANNING DEPARTMENT
162. 795' RADIUS	PLANNING DEPARTMENT
163. 800' RADIUS	PLANNING DEPARTMENT
164. 805' RADIUS	PLANNING DEPARTMENT
165. 810' RADIUS	PLANNING DEPARTMENT
166. 815' RADIUS	PLANNING DEPARTMENT
167. 820' RADIUS	PLANNING DEPARTMENT
168. 825' RADIUS	PLANNING DEPARTMENT
169. 830' RADIUS	PLANNING DEPARTMENT
170. 835' RADIUS	PLANNING DEPARTMENT
171. 840' RADIUS	PLANNING DEPARTMENT
172. 845' RADIUS	PLANNING DEPARTMENT
173. 850' RADIUS	PLANNING DEPARTMENT
174. 855' RADIUS	PLANNING DEPARTMENT
175. 860' RADIUS	PLANNING DEPARTMENT
176. 865' RADIUS	PLANNING DEPARTMENT
177. 870' RADIUS	PLANNING DEPARTMENT
178. 875' RADIUS	PLANNING DEPARTMENT
179. 880' RADIUS	PLANNING DEPARTMENT
180. 885' RADIUS	PLANNING DEPARTMENT
181. 890' RADIUS	PLANNING DEPARTMENT
182. 895' RADIUS	PLANNING DEPARTMENT
183. 900' RADIUS	PLANNING DEPARTMENT
184. 905' RADIUS	PLANNING DEPARTMENT
185. 910' RADIUS	PLANNING DEPARTMENT
186. 915' RADIUS	PLANNING DEPARTMENT
187. 920' RADIUS	PLANNING DEPARTMENT
188. 925' RADIUS	PLANNING DEPARTMENT
189. 930' RADIUS	PLANNING DEPARTMENT
190. 935' RADIUS	PLANNING DEPARTMENT
191. 940' RADIUS	PLANNING DEPARTMENT
192. 945' RADIUS	PLANNING DEPARTMENT
193. 950' RADIUS	PLANNING DEPARTMENT
194. 955' RADIUS	PLANNING DEPARTMENT
195. 960' RADIUS	PLANNING DEPARTMENT
196. 965' RADIUS	PLANNING DEPARTMENT
197. 970' RADIUS	PLANNING DEPARTMENT
198. 975' RADIUS	PLANNING DEPARTMENT
199. 980' RADIUS	PLANNING DEPARTMENT
200. 985' RADIUS	PLANNING DEPARTMENT
201. 990' RADIUS	PLANNING DEPARTMENT
202. 995' RADIUS	PLANNING DEPARTMENT
203. 1000' RADIUS	PLANNING DEPARTMENT

CITY OF LANCASHIRE
FOREST AND INDUSTRIAL PARK
 DEPT. OF PLANNING
 100 N. 10TH ST.
 LANCASHIRE, PA. 17602

LOCATION MAP

CONSENT:
 THIS SUBDIVISION, AS PLATTED, IS WITH THE FREE
 CONSENT AND IN ACCORDANCE WITH THE DESIRES OF THE
 UNDERSIGNED COMRADES:
[Signatures]
 STATE OF VIRGINIA TO WIT:
 I, *[Signature]*, Notary Public for the State of Virginia,
 do hereby certify that the within and foregoing plat of
 subdivision was duly recorded in the office of the
 Register of Deeds of the County of Bedford, Virginia,
 on the 15th day of February, 1981, at 10:00 A.M., and
 that the same is a true and correct copy of the original
 as filed in my office.
 My Commission Expires *[Date]*
 ROBERT W. BROWN, Notary Public

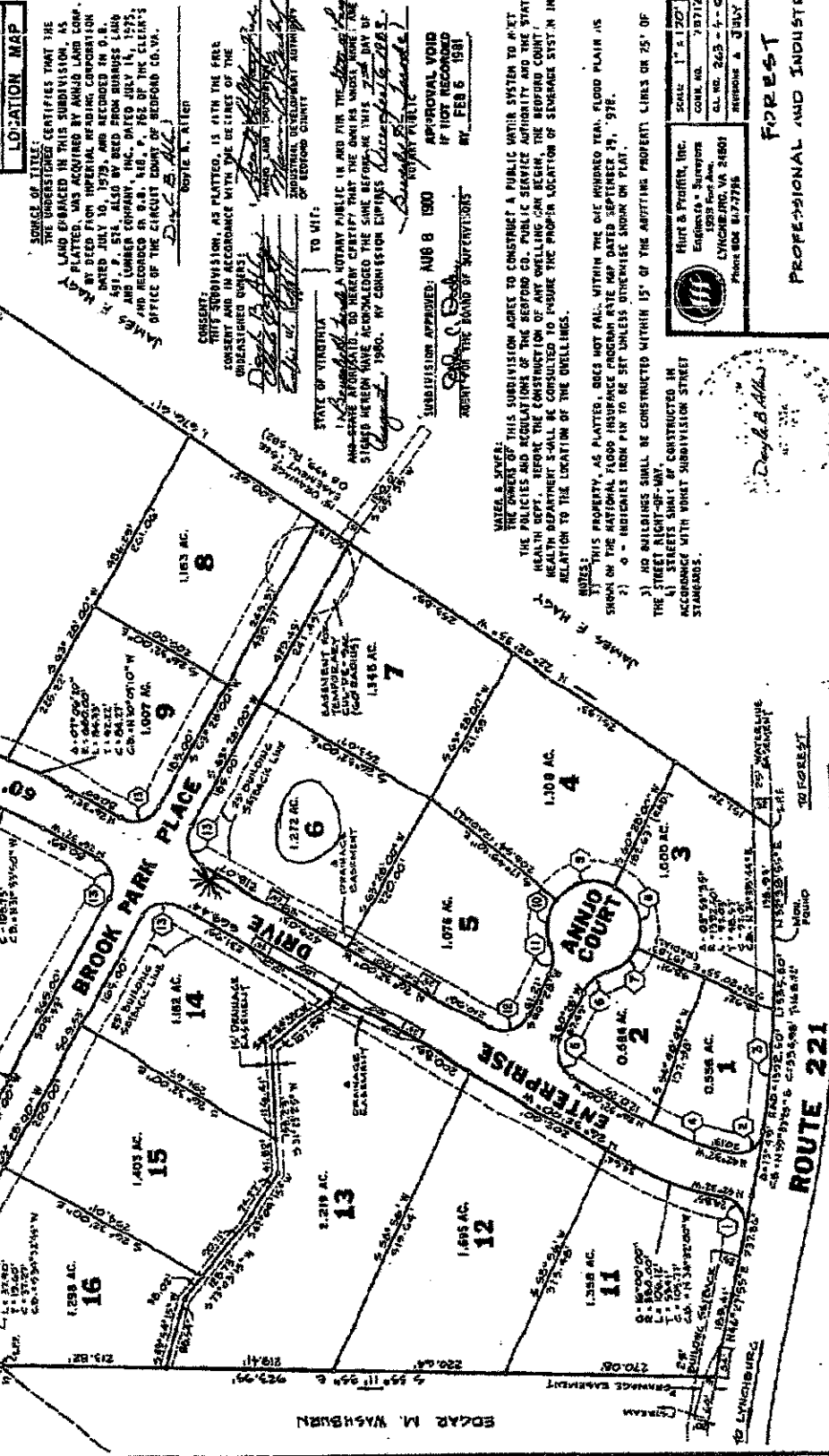
APPROVAL APPROVED: AUG 8 1980
APPROVAL VOID IF NOT RECORDED
 BY FEB 5 1981

NOTES:
 1) NO BUILDINGS SHALL BE CONSTRUCTED WITHIN 15' OF THE ADJACENT PROPERTY LINES OR 75' OF THE STREET RIGHT-OF-WAY.
 2) ALL UTILITIES SHALL BE LOCATED AS SHOWN ON THE ATTACHED SURVEY MAP.
 3) THIS PROPERTY, AS PLATTED, DOES NOT FALL WITHIN THE ONE HUNDRED YEAR FLOOD PLAIN AS SHOWN ON THE NATIONAL FLOOD INSURANCE PROGRAM FLOOD DAMAGE PREVENTION MAP, 1976.
 4) STREETS SHOWN ON THIS SUBDIVISION STREET STANDARDS.

WATER SEWER:
 THE OWNER OF THIS SUBDIVISION AGREES TO CONSTRUCT A PUBLIC UTILITY SYSTEM TO MEET THE POLICIES AND REGULATIONS OF THE BEDFORD CO. PUBLIC SERVICE AUTHORITY AND THE STATE HEALTH DEPARTMENT. THE PLANS WILL BE CONSULTED TO ENSURE THE PROPER LOCATION OF SEWERAGE SYSTEM IN RELATION TO THE LOCATION OF THE DWELLINGS.

FRUIT & PROFIT, INC.
 Engineers & Surveyors
 LANCASHIRE, PA. 17601
 Phone: 800-847-7795

PROFESSIONAL AND INDUSTRIAL PARK FOREST
 JEFFERSON DISTRICT
 BEDFORD COUNTY, VIRGINIA



ANNJO LAND CORPORATION
 (SEE DE-181, PG. 252)

EDGAR M. WASHBURN

ROUTE 221

FOREST

2679 2/26
 3 26
 326

