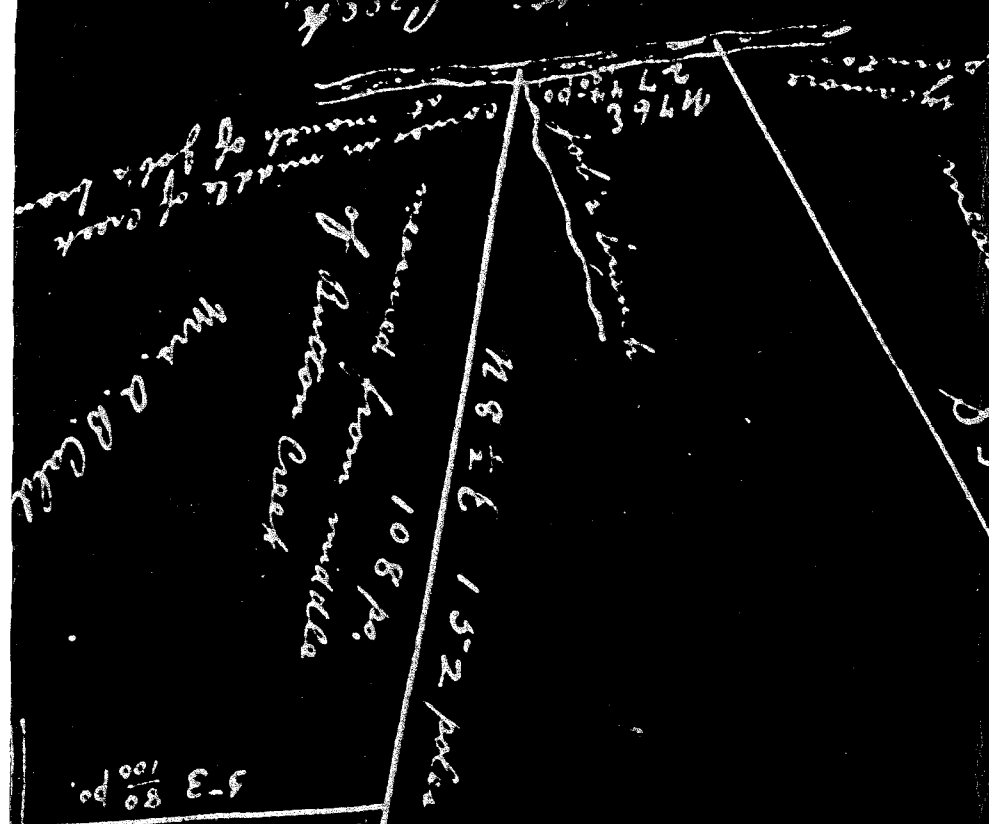


Benjamin H. Justice

§ 30 1/2 E 22 6 po.



Mrs. A. B. Clark

5-3 80/100 po.

M 84 E

44 po. 88 W

117 Acres

S. Martin, Caldwell

N 58 W 123 po.

74 Acres

S. A. Caldwell

John's Run

866 W

W. J. Martin

N 40 W 31 po.

N 30 W 12 po.

N 52 W 23 po.

N 67 W 11 1/2 po.

Stake

M 66 E 85.5 W 20 7/8 po.

M 66 W 13 1/4 po.

Stake

N 75 W 13 8/4 po.

N 85 1/2 W 24 1/2 po.

W. J. Lawrence

W. J. Lawrence

Stake